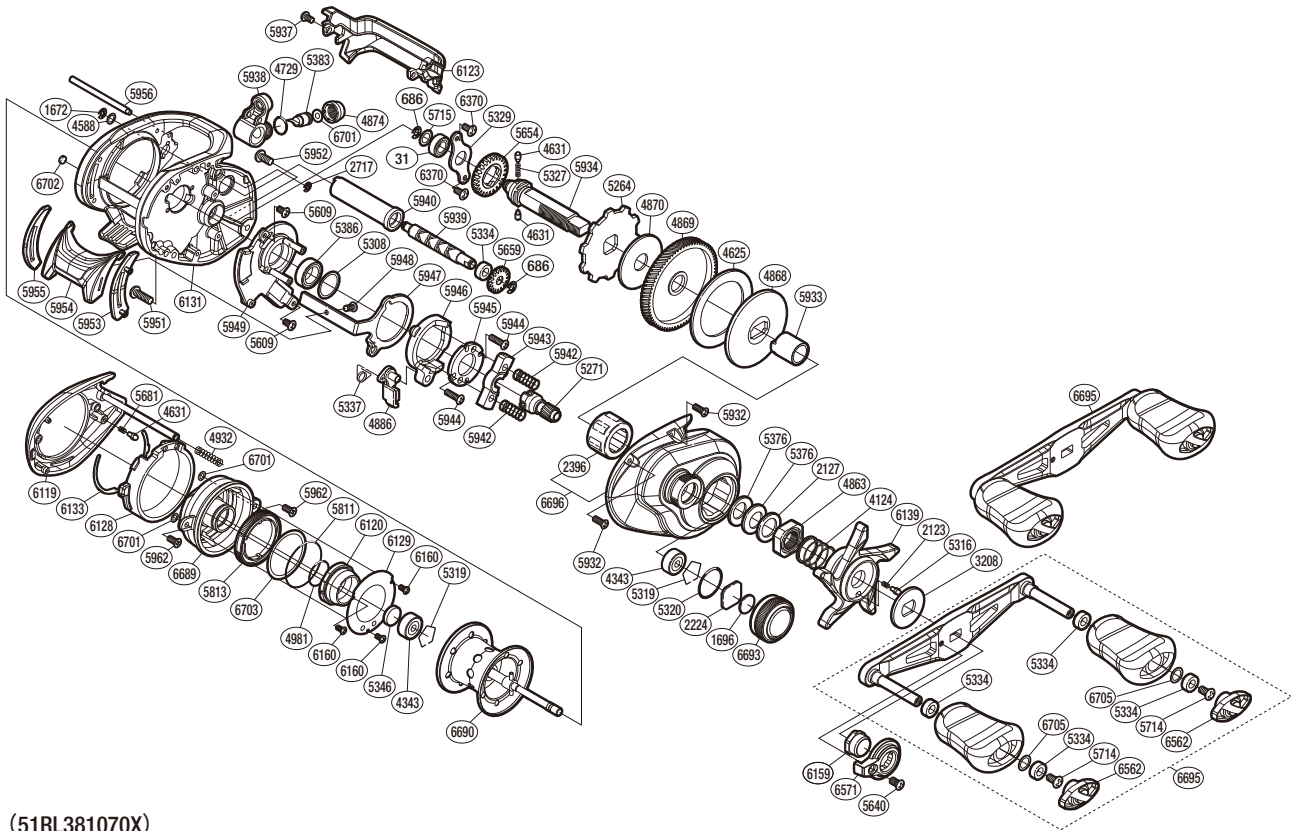


# SHIMANO

**SLX** SA-RB

**SLXMGL70**



(51RL381070X)

Please note that the number of adjusting washers may not be the same as shown in the exploded views.  
(Adjustment will vary with each individual product.)

Part No.	Description	Part No.	Description	Part No.	Description
BNT0031	Ball Bearing	BNT5329	Drive Shaft Retainer	BNT5951	Screw
BNT0686	E Lock	BNT5334	Bushing	BNT5952	Screw
BNT1672	E Lock	BNT5337	Clutch Pawl Spring	BNT5953	Clutch Bar Guide B
BNT1696	Cast Control Spacer B	BNT5346	Spacer B	BNT5954	Clutch Button
BNT2123	Click Spring	BNT5376	Drag Spring Washer	BNT5955	Clutch Bar Guide A
BNT2127	Star Drag Spacer	BNT5383	Line Guide Pawl	BNT5956	Stabilizer Bar
BNT2224	Spool Tension Spacer A	BNT5386	Ball Bearing	BNT5962	Screw
BNT2396	Roller Clutch Bearing	BNT5609	Screw	BNT6119	Left Side Plate Assembly
BNT2717	E Lock	BNT5640	Screw	BNT6120	Brake Pipe Gear Assembly
BNT3208	Star Drag Click Plate	BNT5654	Idle Gear	BNT6123	Level Wind Protector
BNT4124	Star Drag Spring	BNT5659	Idle Gear	BNT6128	B Side Plate Cam Lever
BNT4343	Ball Bearing	BNT5681	Spring	BNT6129	Br Dial Retainer Plate
BNT4588	Washer	BNT5714	Screw	BNT6131	Frame
BNT4625	Drag Washer	BNT5715	Washer	BNT6133	Washer
BNT4631	Idle Gear Pin	BNT5811	O Ring	BNT6139	Star Drag
BNT4729	O Ring	BNT5813	Brake Dial	BNT6159	Handle Nut
BNT4863	Star Drag Nut	BNT5932	Screw	BNT6160	Screw
BNT4868	Key Washer	BNT5933	Roller Clutch Inner Tube	BNT6370	Screw
BNT4869	Drive Gear	BNT5934	Drive Shaft	BNT6562	Handle Knob Seal
BNT4870	Drag Washer	BNT5937	Screw	BNT6571	Handle Nut Plate
BNT4874	Pawl Cap	BNT5938	Line Guide Assembly	BNT6689	Dial Case
BNT4886	Clutch Pawl	BNT5939	Worm Shaft	BNT6690	Spool Assembly
BNT4932	Click Spring	BNT5940	Level Wind Guard	BNT6693	Cast Control Cap
BNT4981	O Ring	BNT5942	Yoke Spring	BNT6695	Handle Assembly
BNT5264	Anti-Reverse Ratchet	BNT5943	Yoke	BNT6696	Right Side Plate Assembly
BNT5271	Pinion Gear	BNT5944	Screw	BNT6701	Washer
BNT5308	Washer	BNT5945	Clutch Cam Retainer	BNT6702	Washer
BNT5316	Click Pin	BNT5946	Clutch Cam	BNT6703	Washer
BNT5319	Bearing Retainer	BNT5947	Clutch Plate	BNT6705	Washer
BNT5320	O Ring	BNT5948	Screw		
BNT5327	Idle Gear Spring	BNT5949	Clutch Guard Assembly	BNT4692	B-100 Oil (Accessory)